



PPE Vision

The Next Generation Met Office

Professor Penelope Endersby
Met Office CEO

Chris Perkins
Head of Public Sector – Microsoft UK

Charles Ewen
Technology Director Met Office

Our purpose and vision

*Helping you make better decisions
to **stay safe and thrive***

*Recognised as global leaders in weather and
climate science and services in our changing world*

Our strategy

Our purpose:

Why we exist

Helping you make better decisions **to stay safe and thrive**

Our vision:

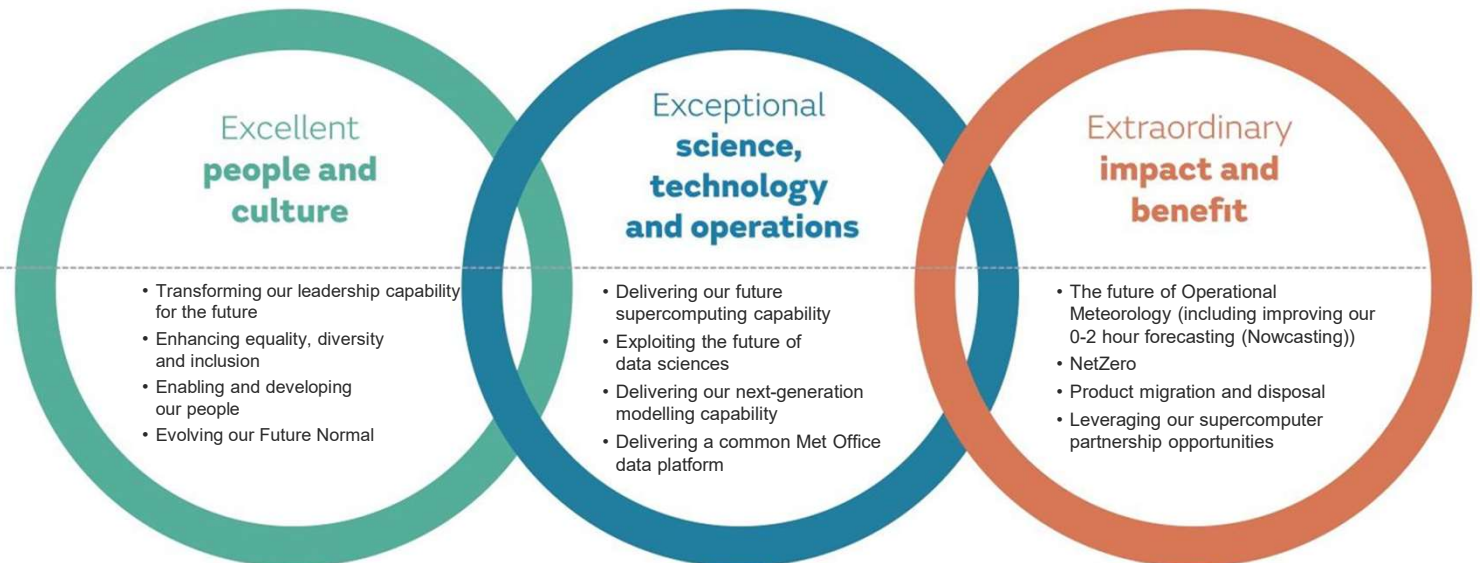
What we will achieve by 2024

Recognised as global leaders in weather and climate science and services in our changing world

Strategic anchors:

These are the areas we will focus on.

The three areas overlap and complement each other.



Strategic actions:

Our priority activities which we'll monitor & measure.

- Transforming our leadership capability for the future
- Enhancing equality, diversity and inclusion
- Enabling and developing our people
- Evolving our Future Normal

- Delivering our future supercomputing capability
- Exploiting the future of data sciences
- Delivering our next-generation modelling capability
- Delivering a common Met Office data platform

- The future of Operational Meteorology (including improving our 0-2 hour forecasting (Nowcasting))
- NetZero
- Product migration and disposal
- Leveraging our supercomputer partnership opportunities

Our strategy

Our purpose:

Why we exist

Helping you make better decisions **to stay safe and thrive**

Our vision:

What we will achieve by 2024

Recognised as global leaders in weather and climate science and services in our changing world

Strategic anchors:

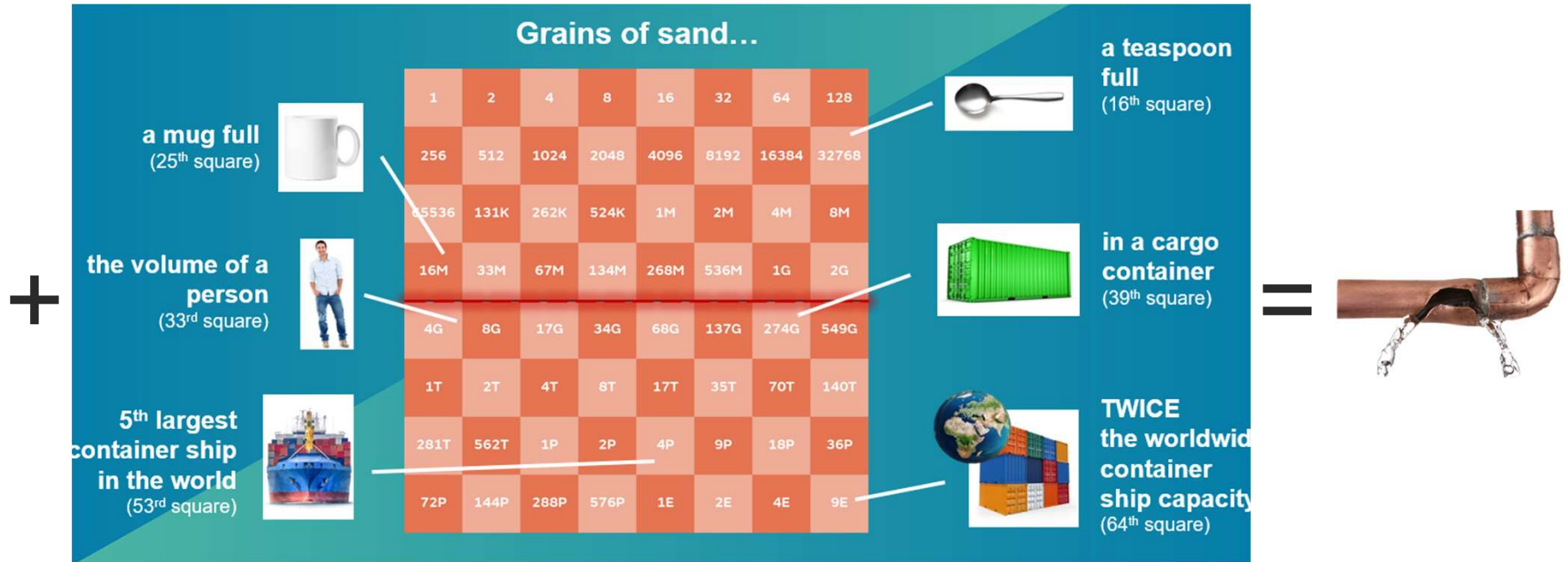
These are the areas we will focus on.

The three areas overlap and complement each other.

Strategic actions:

Our priority activities which we'll monitor & measure.





Evolved Infrastructure, exponentially growing infrastructure leading to slowing ability to 'pull-through' science

A threaded system to a capability platforms approach



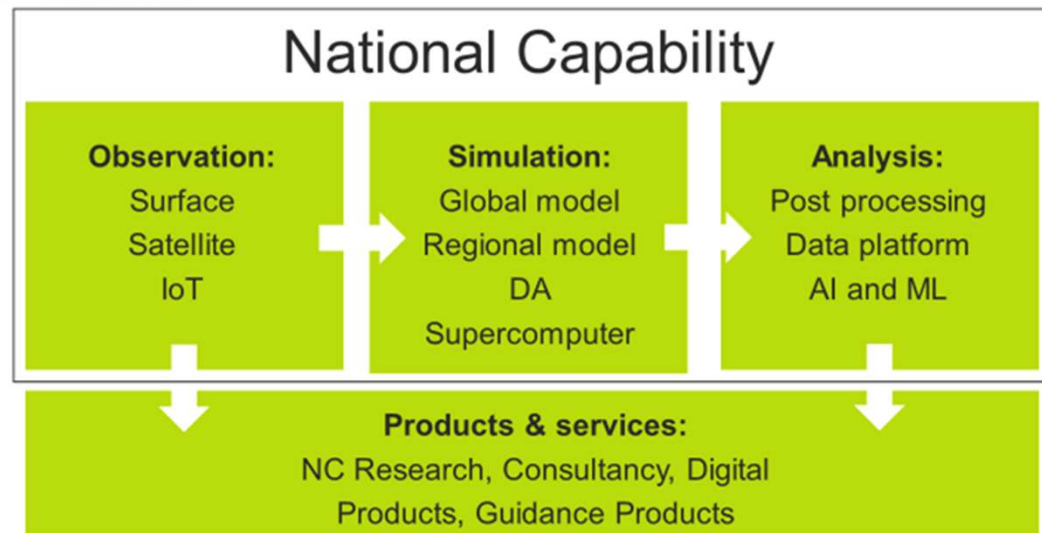
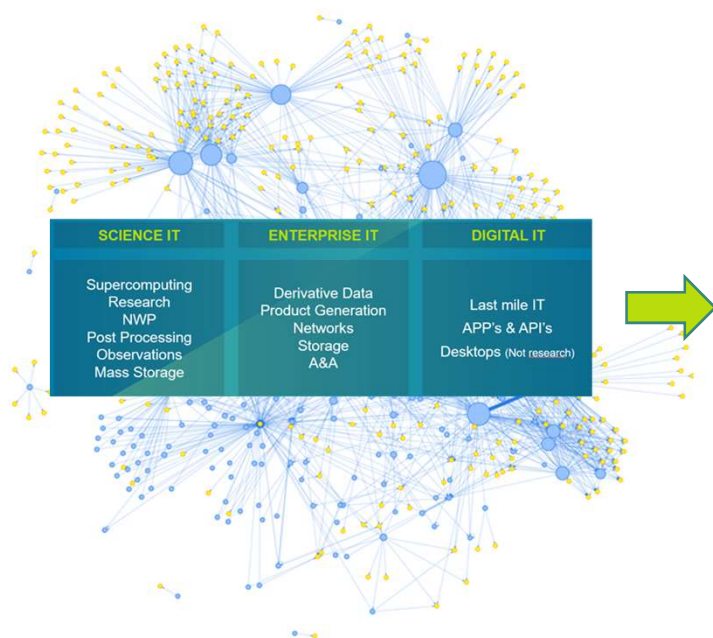
- ~2015 Started with 'Digital IT' and now develop in 'cloud native abstract and ephemeral' tech'
- Large productivity and cost savings, skills and cultural advances, experience and trust in cloud
- Very close and strategic relationship with AWS as they develop their service offering

A threaded system to a capability platforms approach

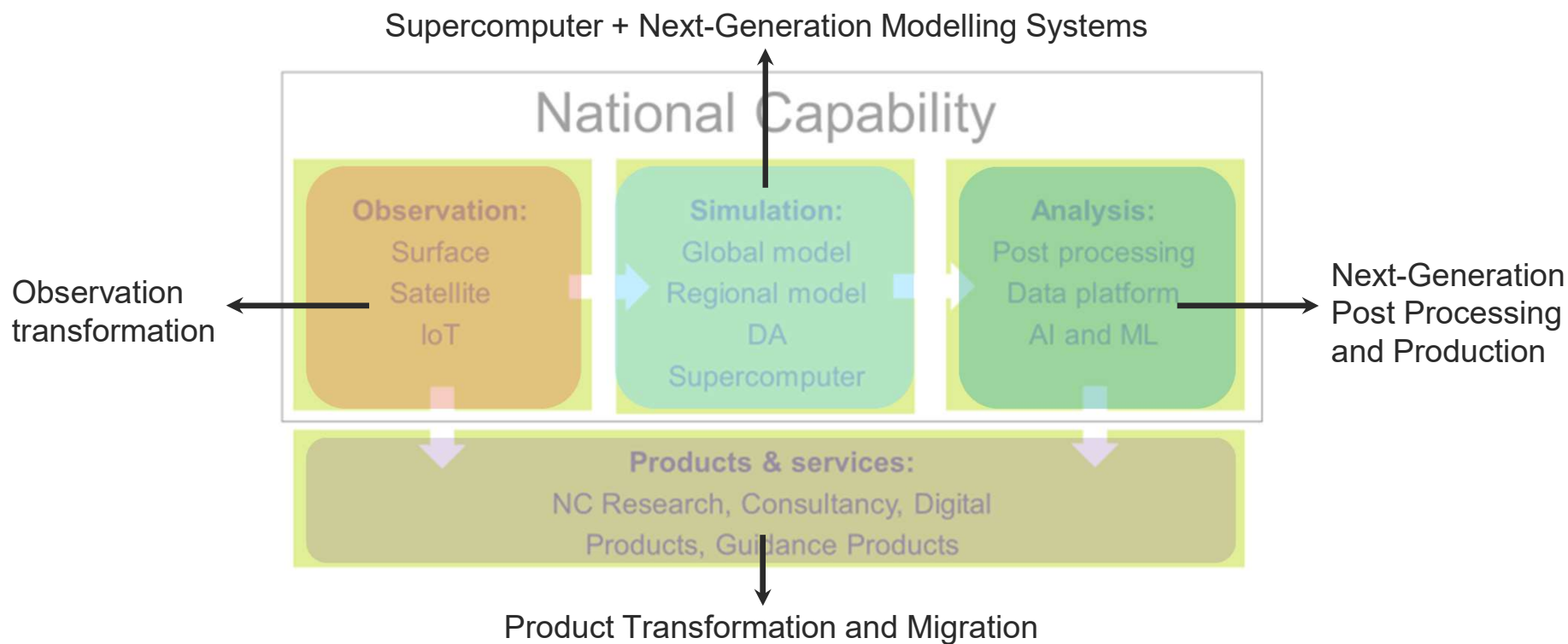


- Tender approach built upon our Cloud experience
- Many reasons to go for an 'as a service' model in favour of an 'own and operate model'

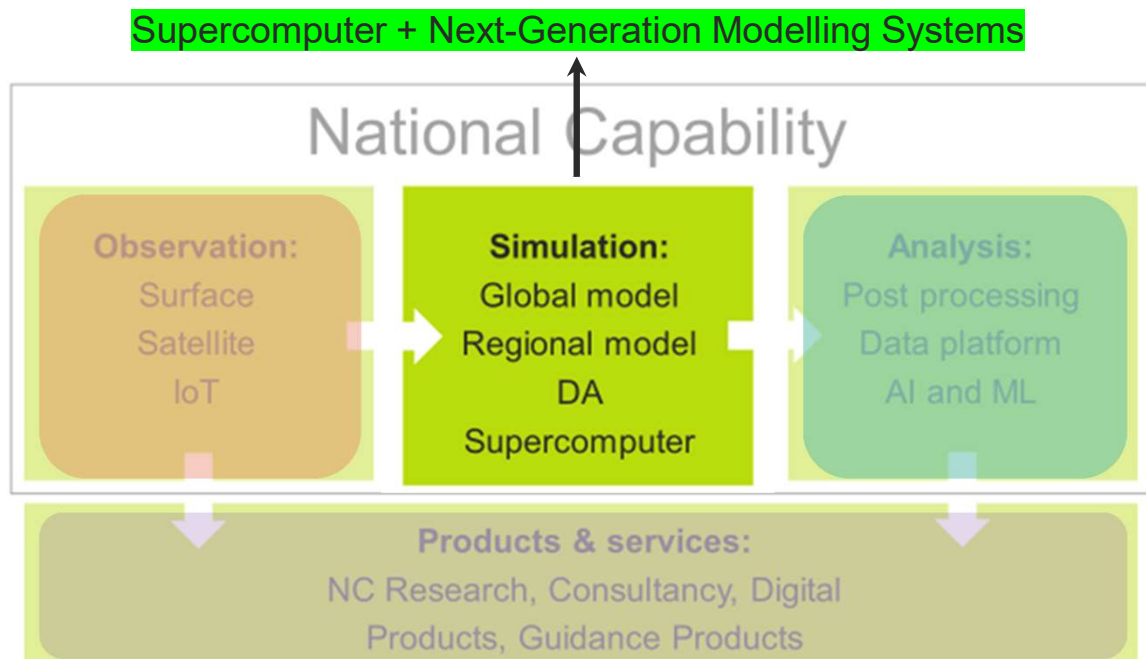
Concept to structure



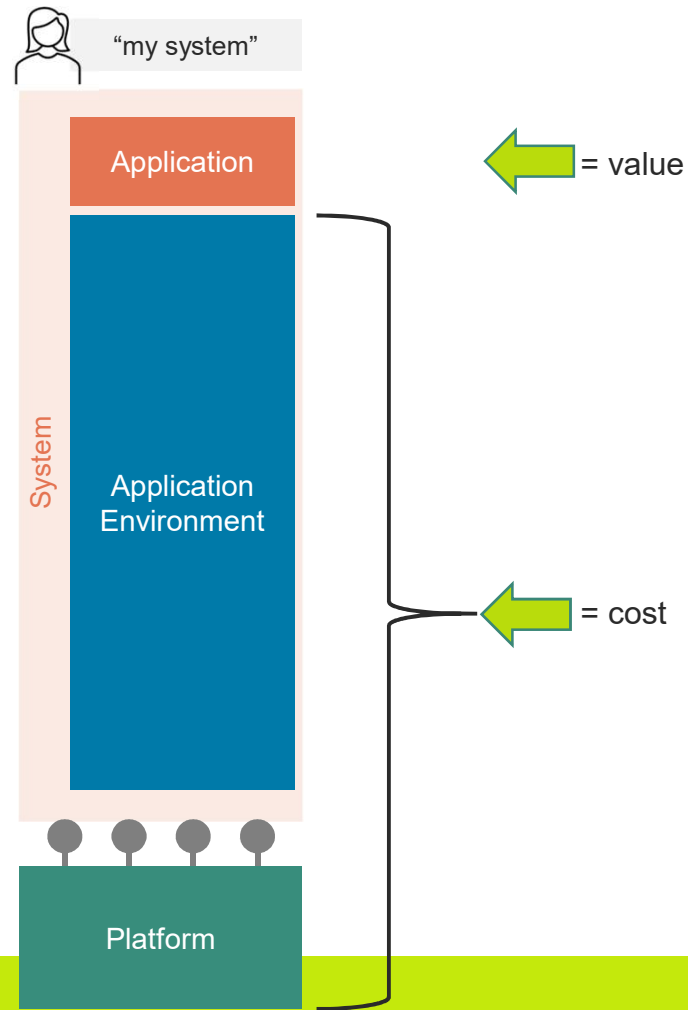
A part of wider transformation



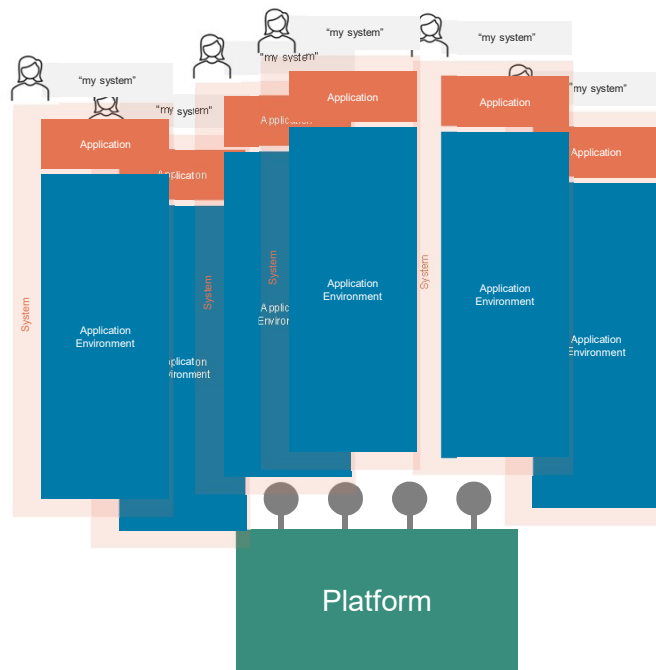
A part of wider transformation



System vs platform



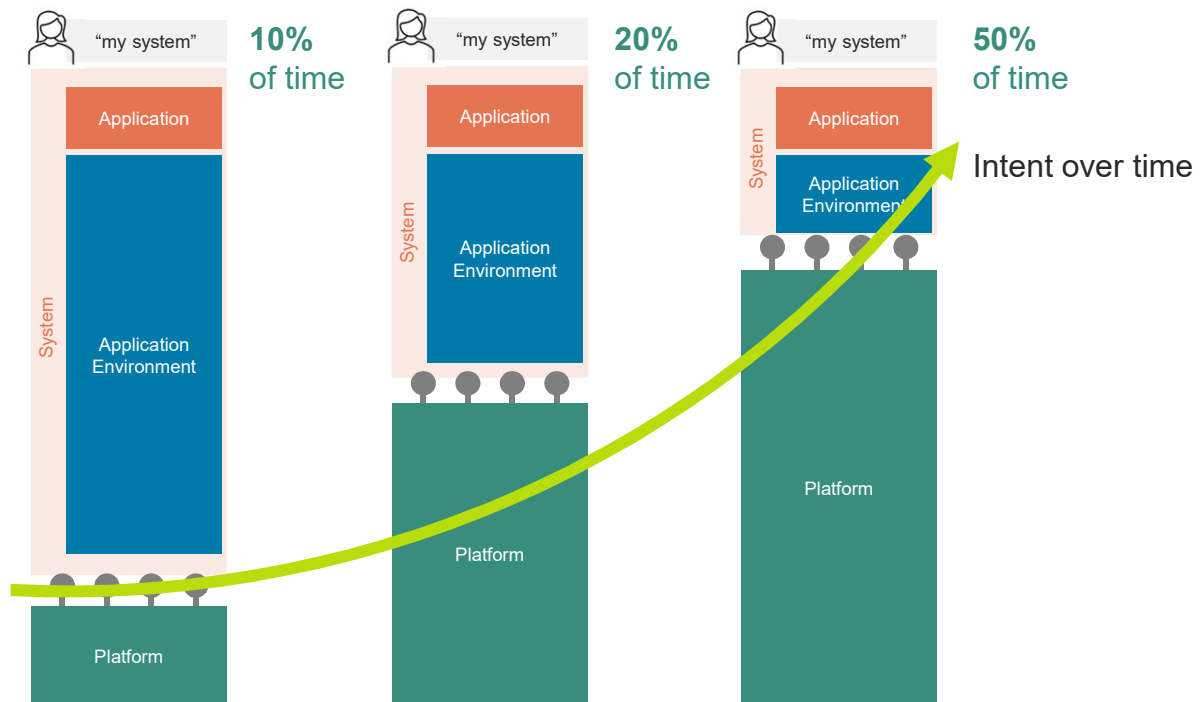
Highly scaled – highly complex



=



A platform / partner approach



A new strategic collaboration...



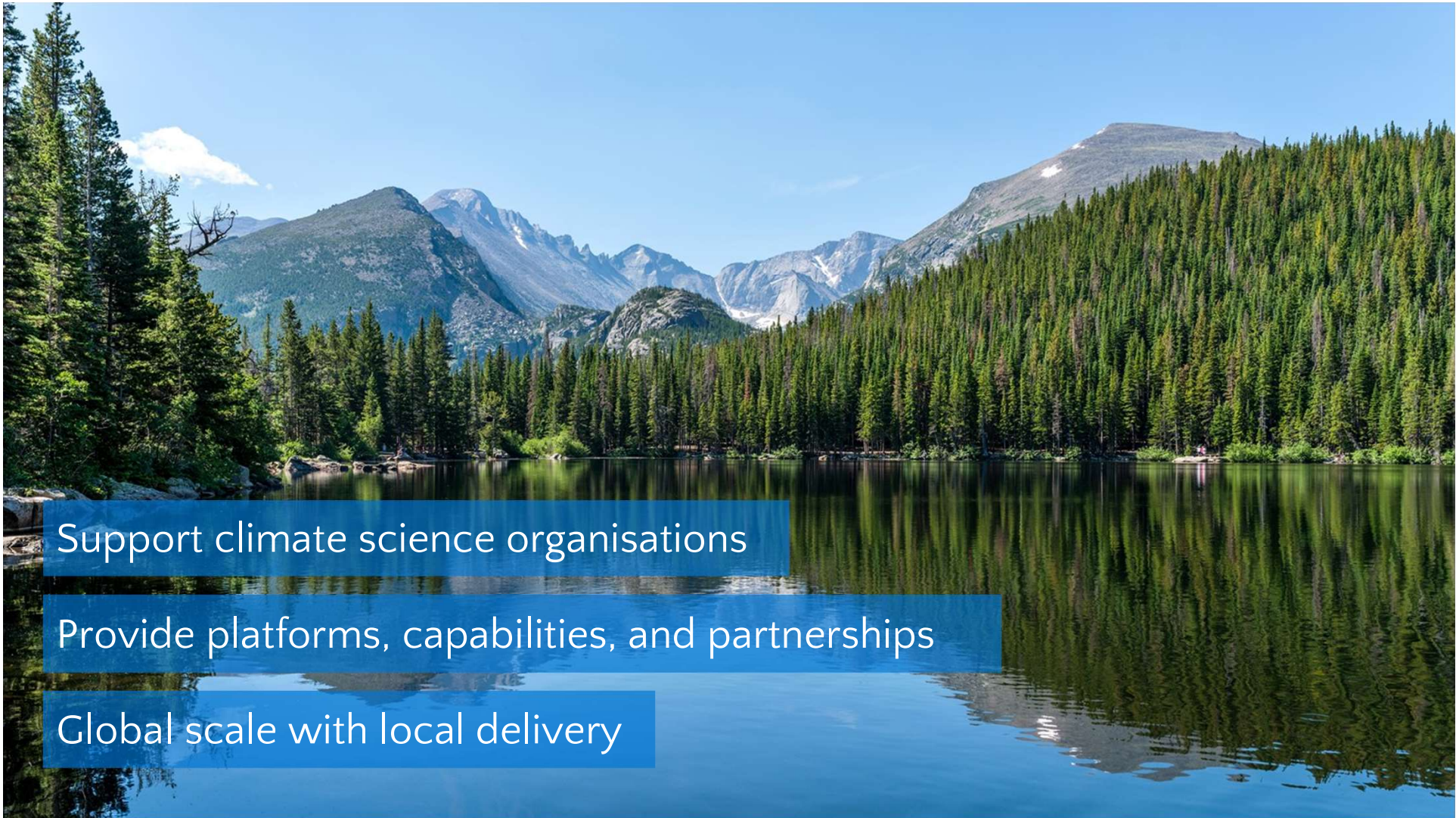


Microsoft Vision to support Weather and Climate Science

Chris Perkins
General Manager, Public Sector, Microsoft UK

Microsoft global sustainability commitments

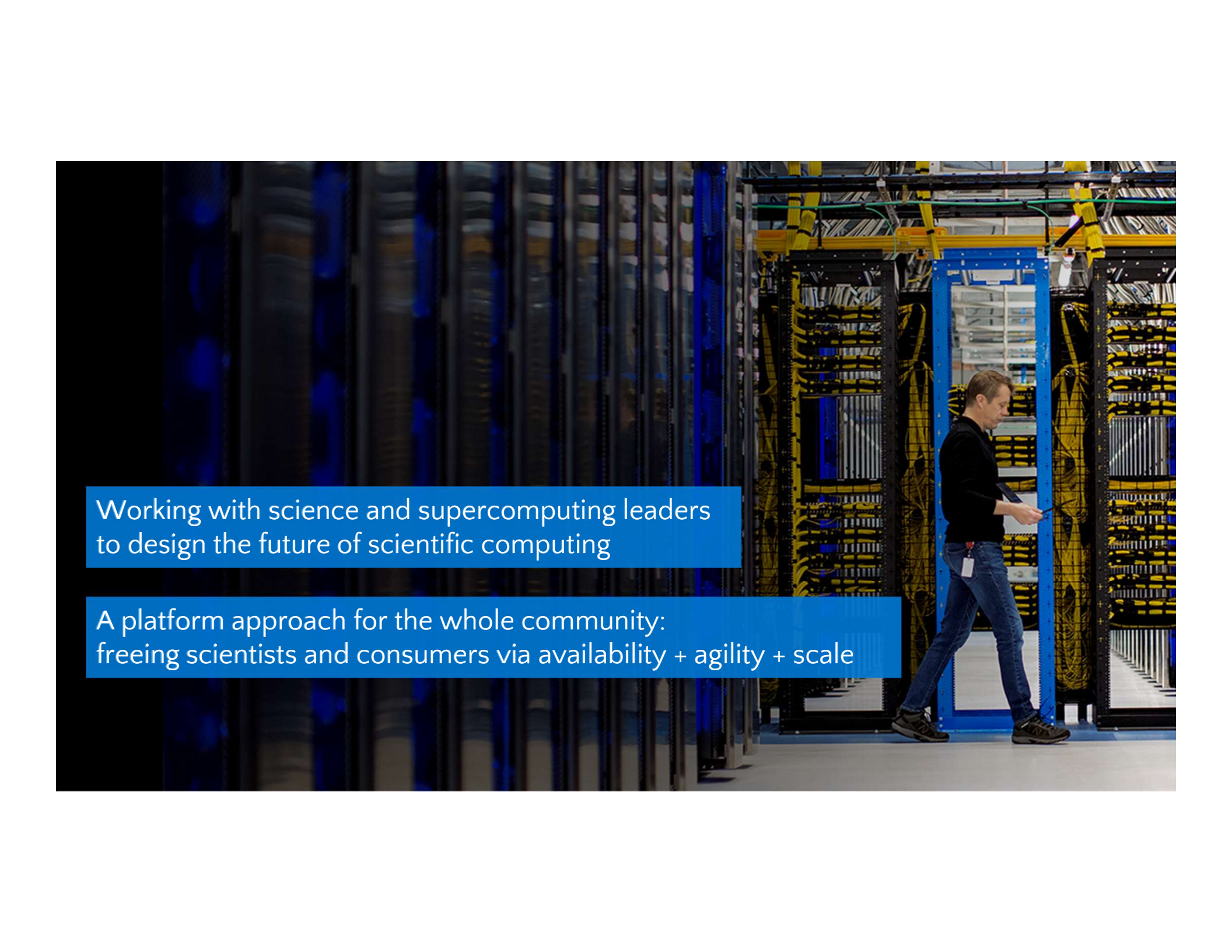




Support climate science organisations

Provide platforms, capabilities, and partnerships

Global scale with local delivery



Working with science and supercomputing leaders
to design the future of scientific computing

A platform approach for the whole community:
freeing scientists and consumers via availability + agility + scale

An aerial photograph of a coastline. The right side of the image shows the ocean with white-capped waves crashing against a dark, rocky shore. The left side of the image is a dark, starry night sky. The text 'Thank you' and 'Any questions?' is overlaid on the dark sky area.

Thank you

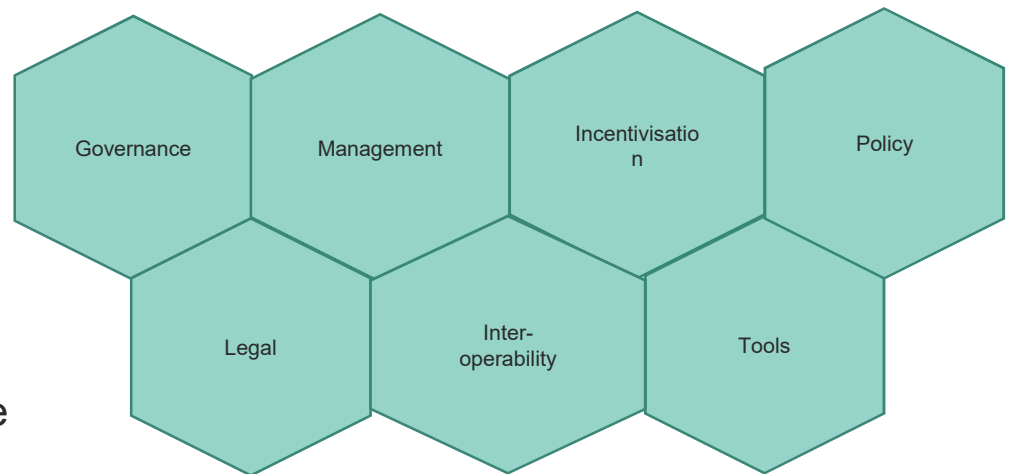
Any questions?

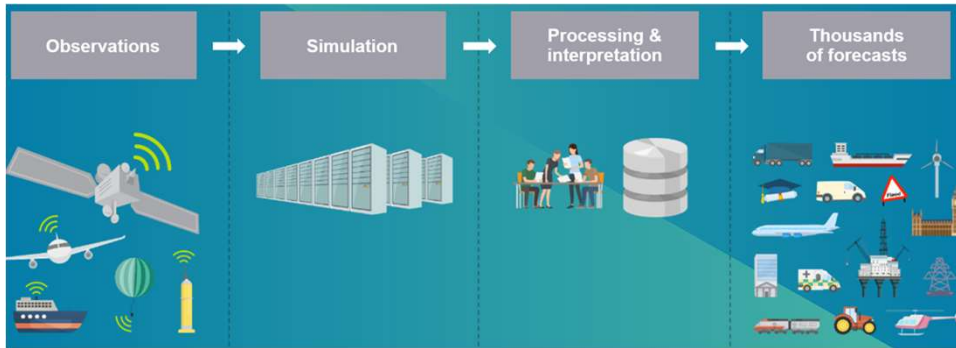
Additional slides for reference

EUMETNET – Federated Data Coordination Mechanism (FDCM)

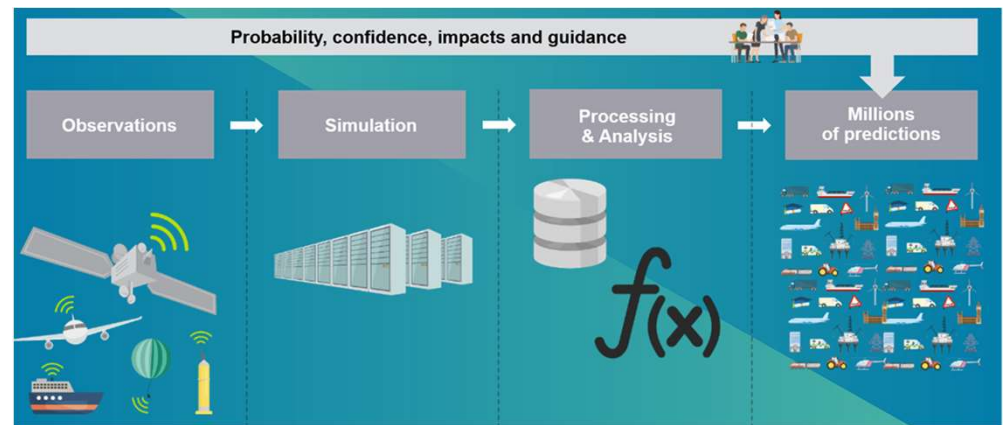
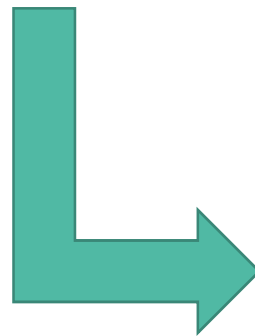
Met Office Response:

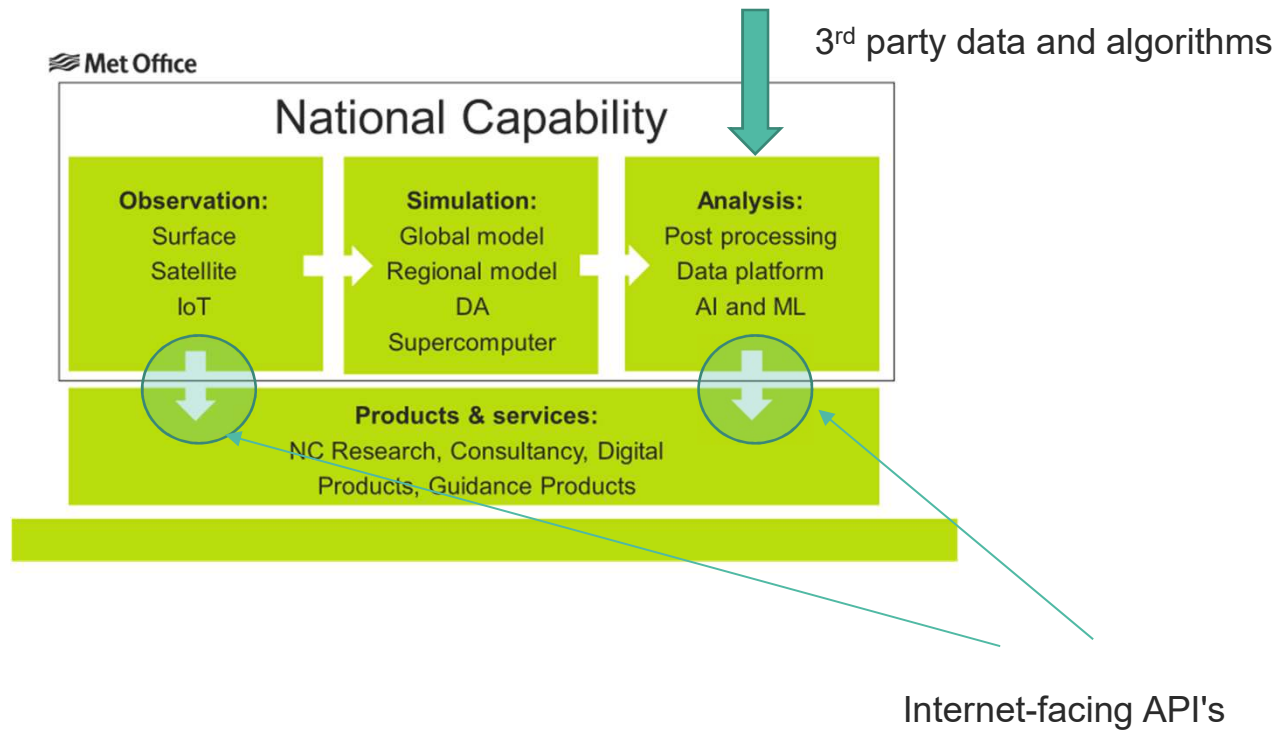
- Strategy to improve data sharing
- Long-term budget where delivery requirements can be refined over time
- MS shaping contribution but Met Office retains responsibility



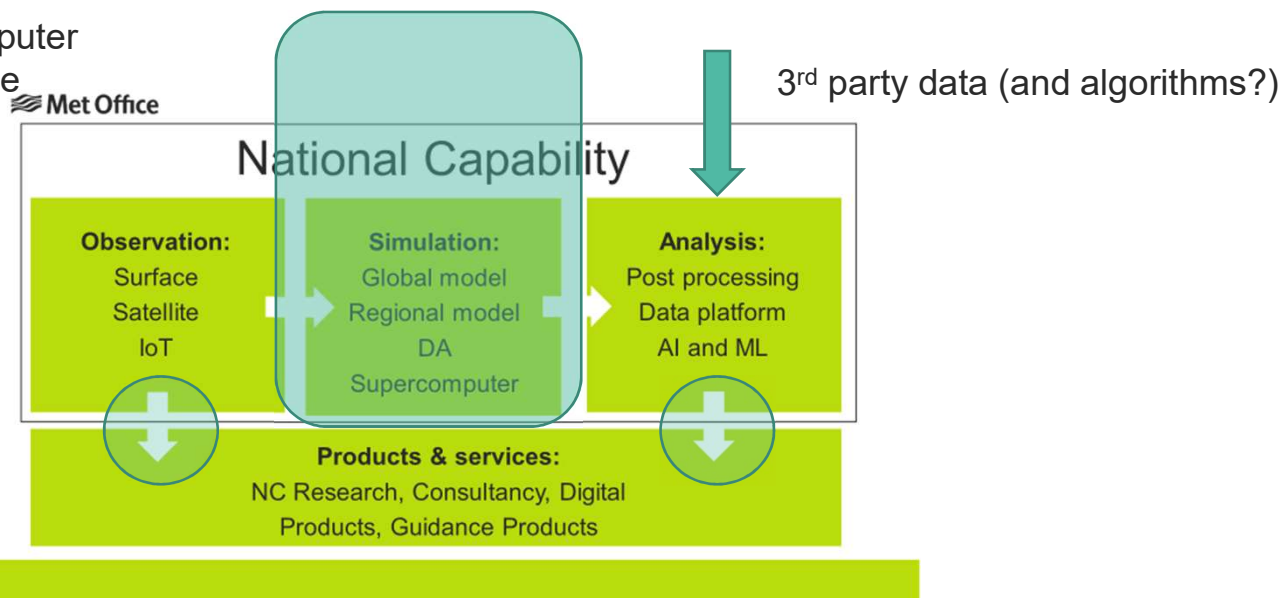


- Changing over decades
- A result of scientific and technological advance
- Human role increasingly to interpret the forecast and its impacts over *making the forecast*
- Challenges in of data verbosity and complexity as science progresses from deterministic to probabilistic
- Always a place for advice and guidance

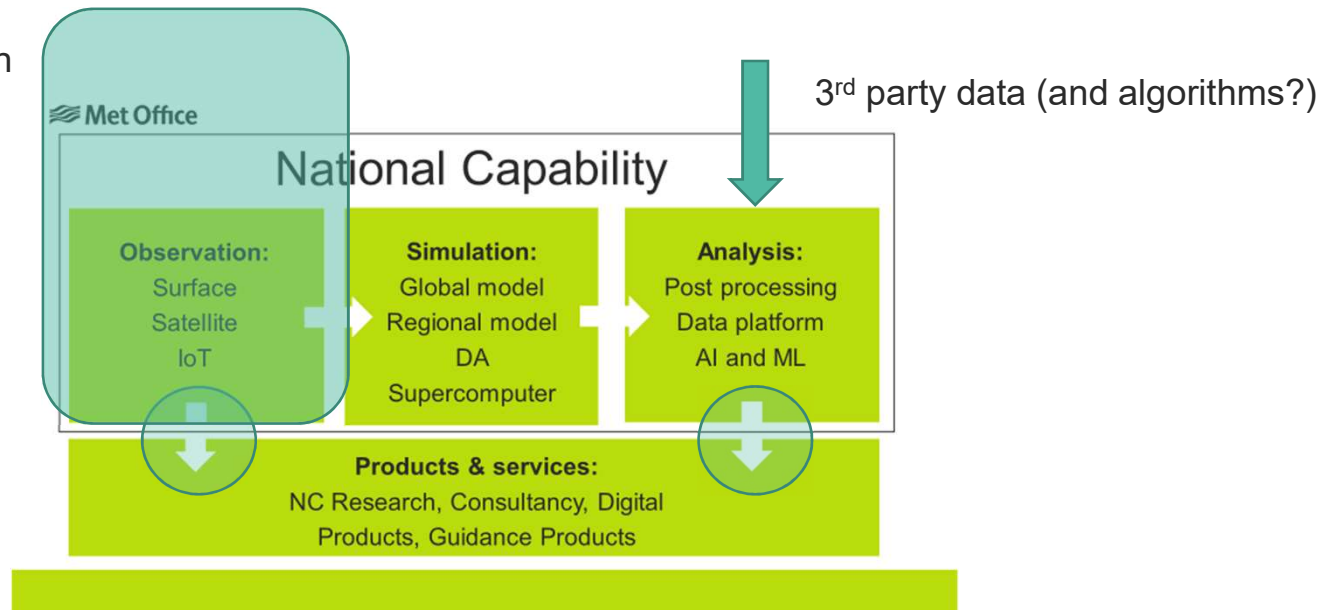




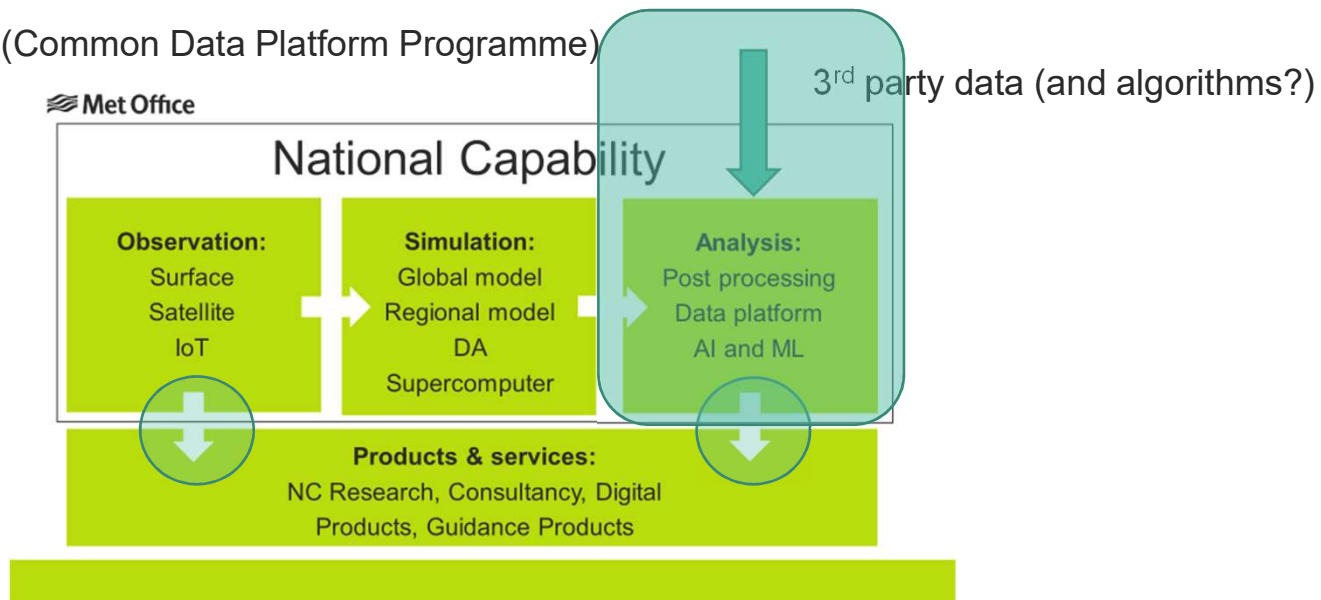
Supercomputer
Programme
NGMS

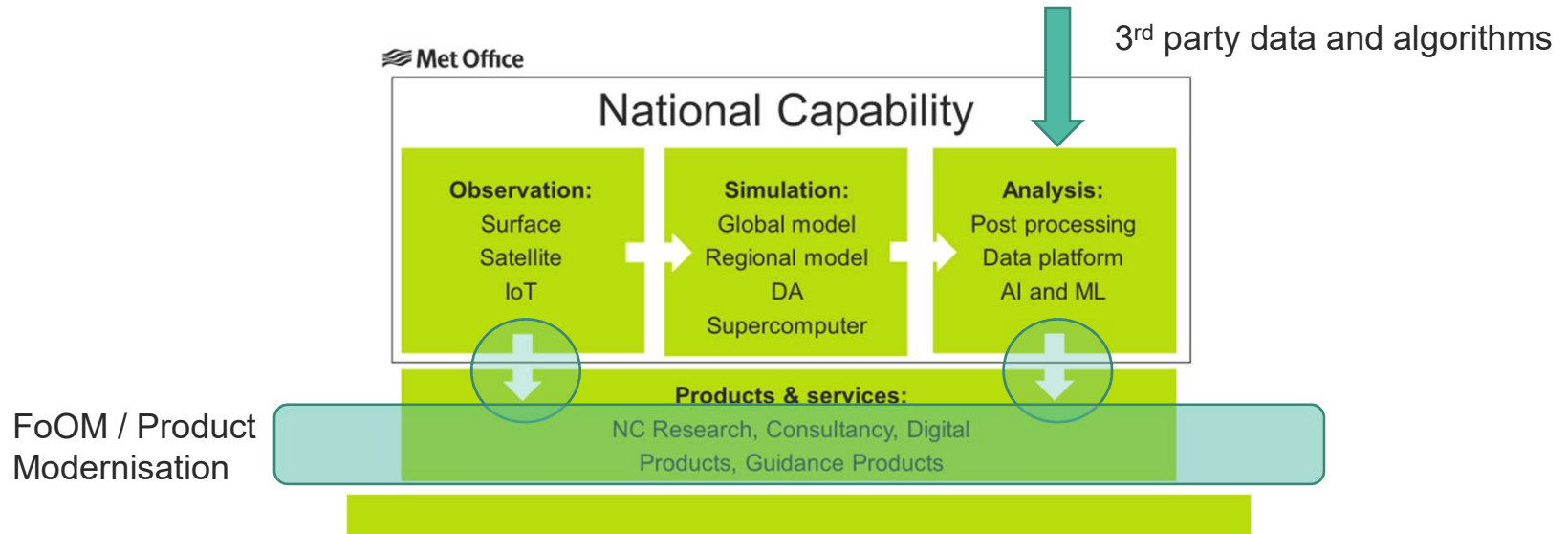


Obs modernisation
Programme
(NGMS)

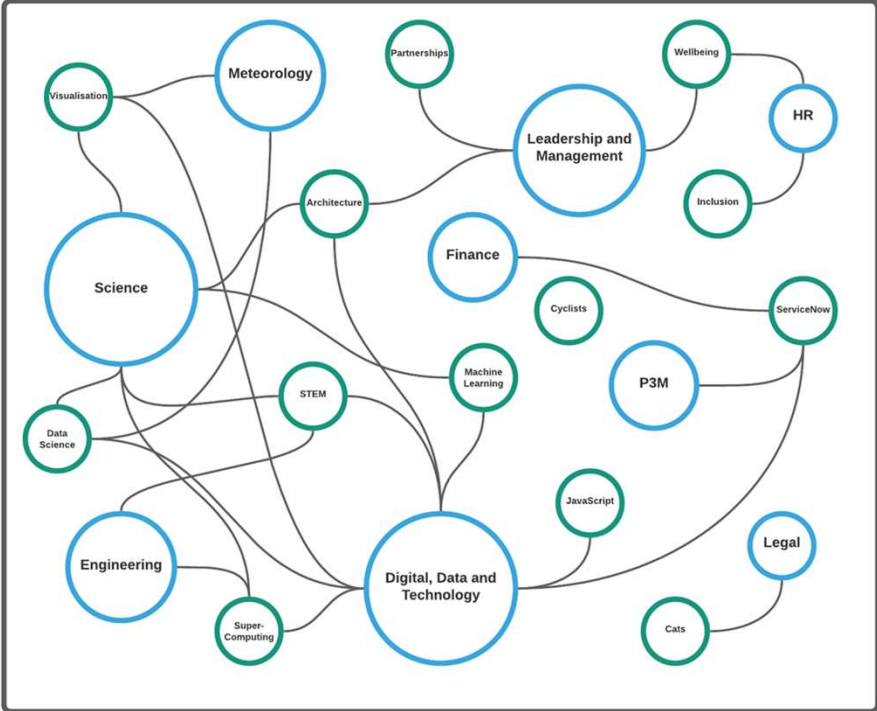


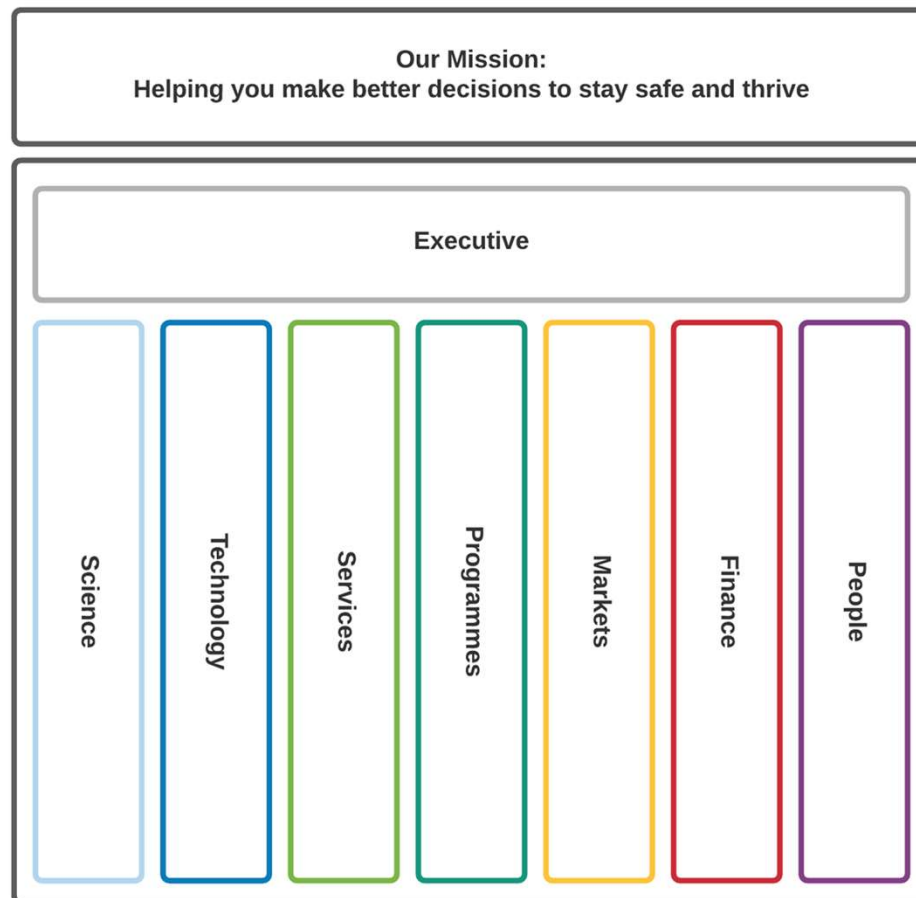
Prism (Common Data Platform Programme)

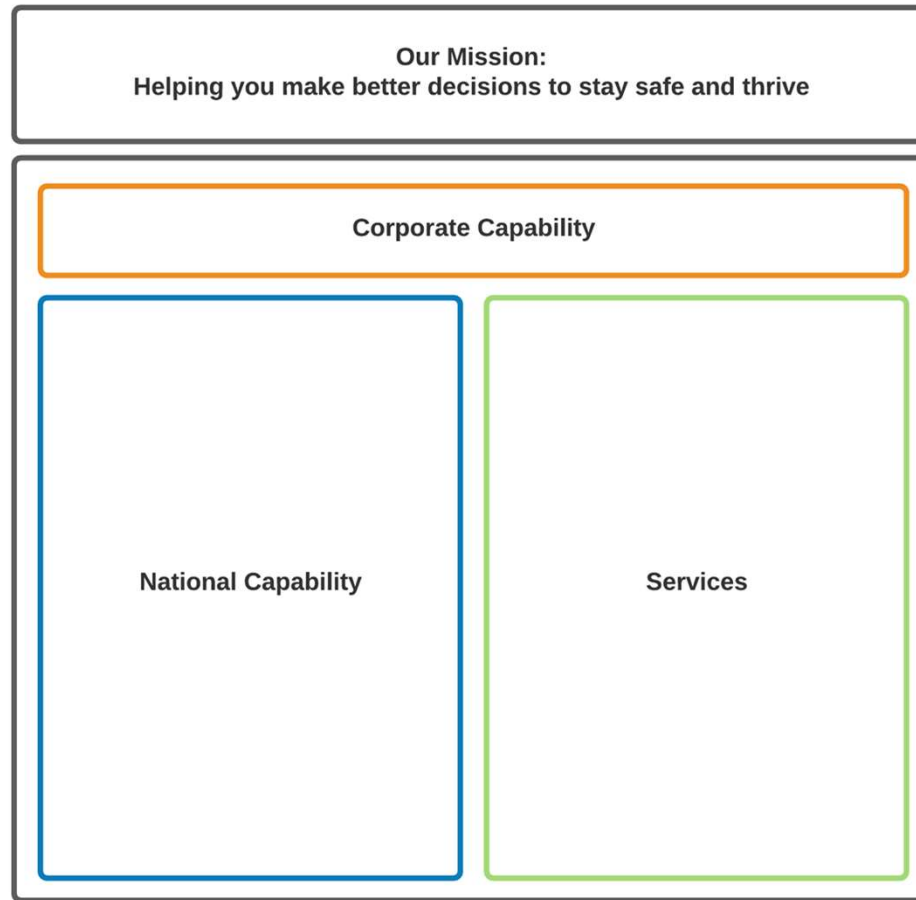


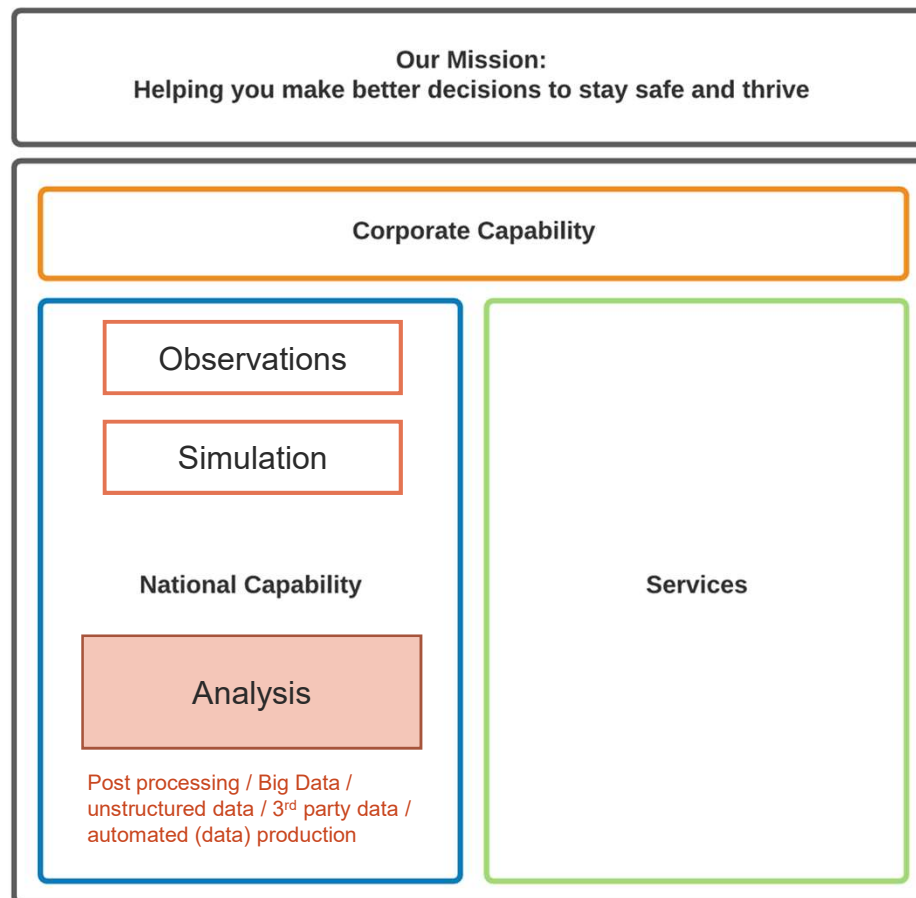


Our Mission:
Helping you make better decisions to stay safe and thrive







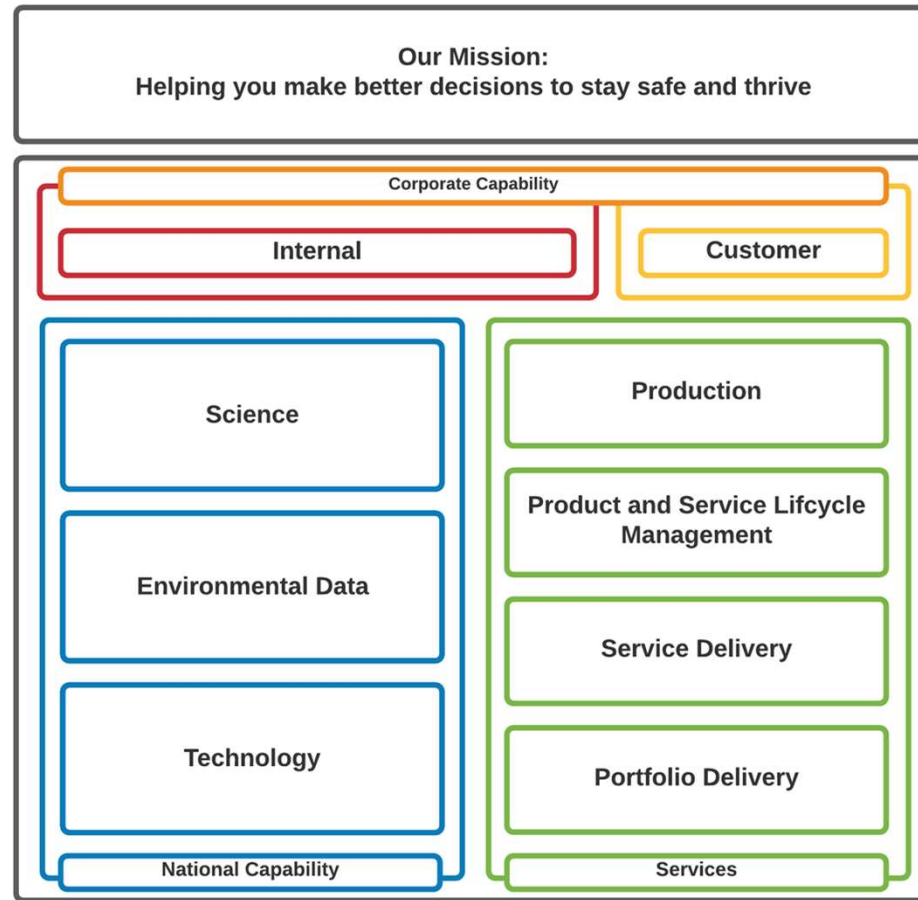


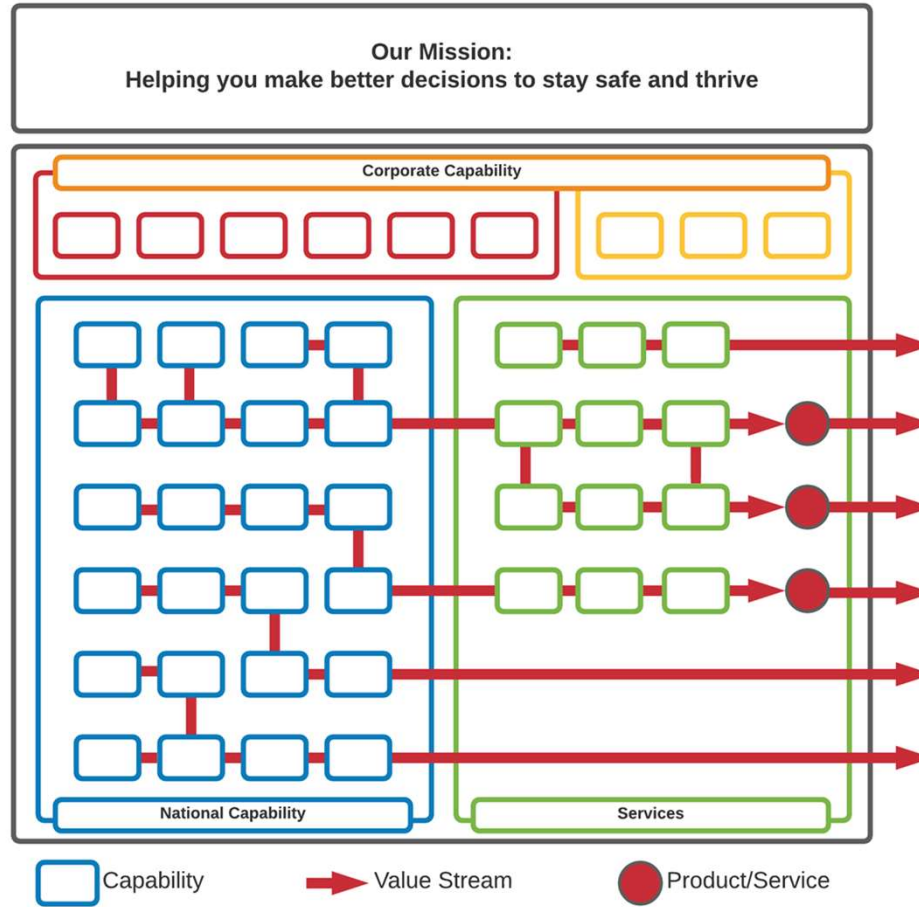
Our Mission:
Helping you make better decisions to stay safe and thrive

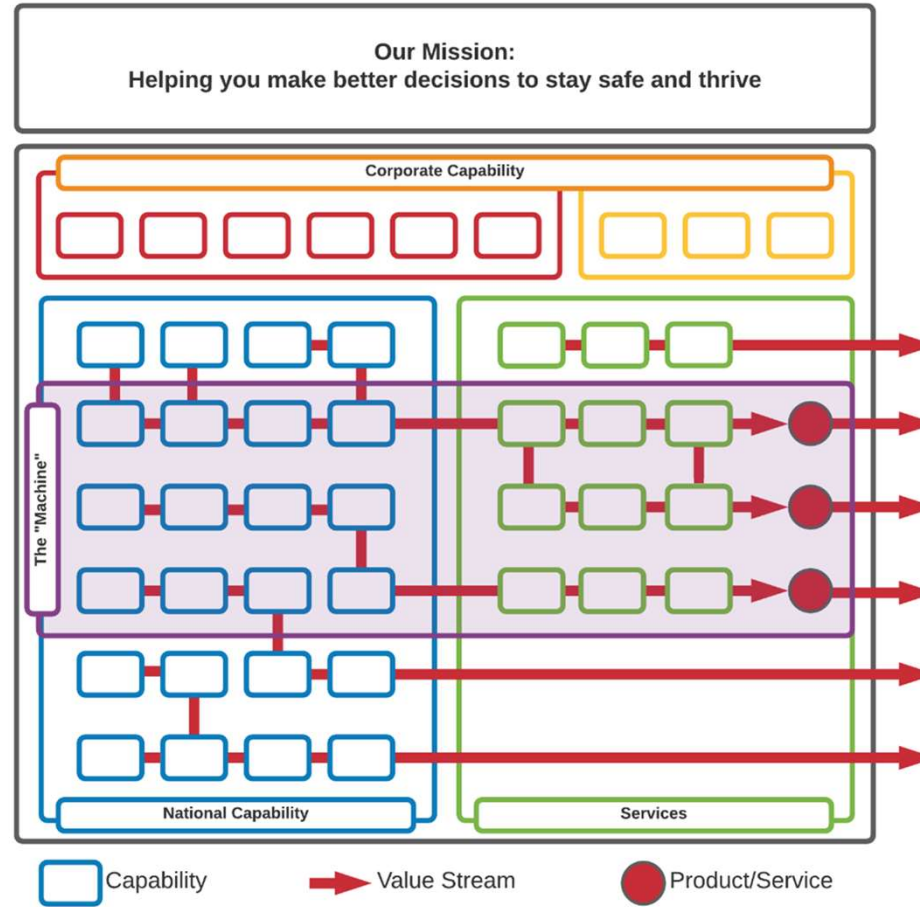


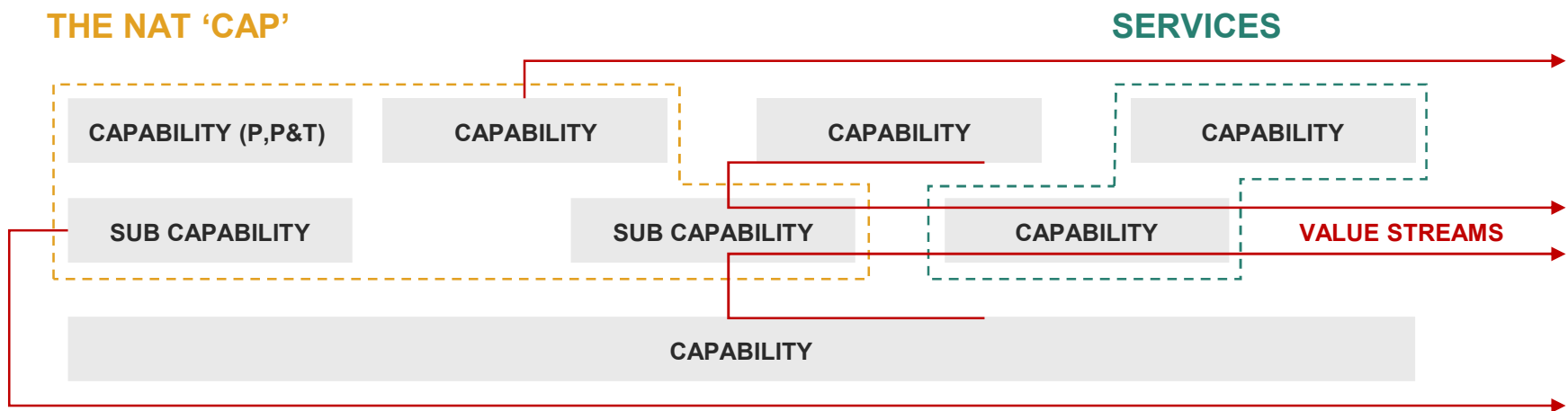
Professions

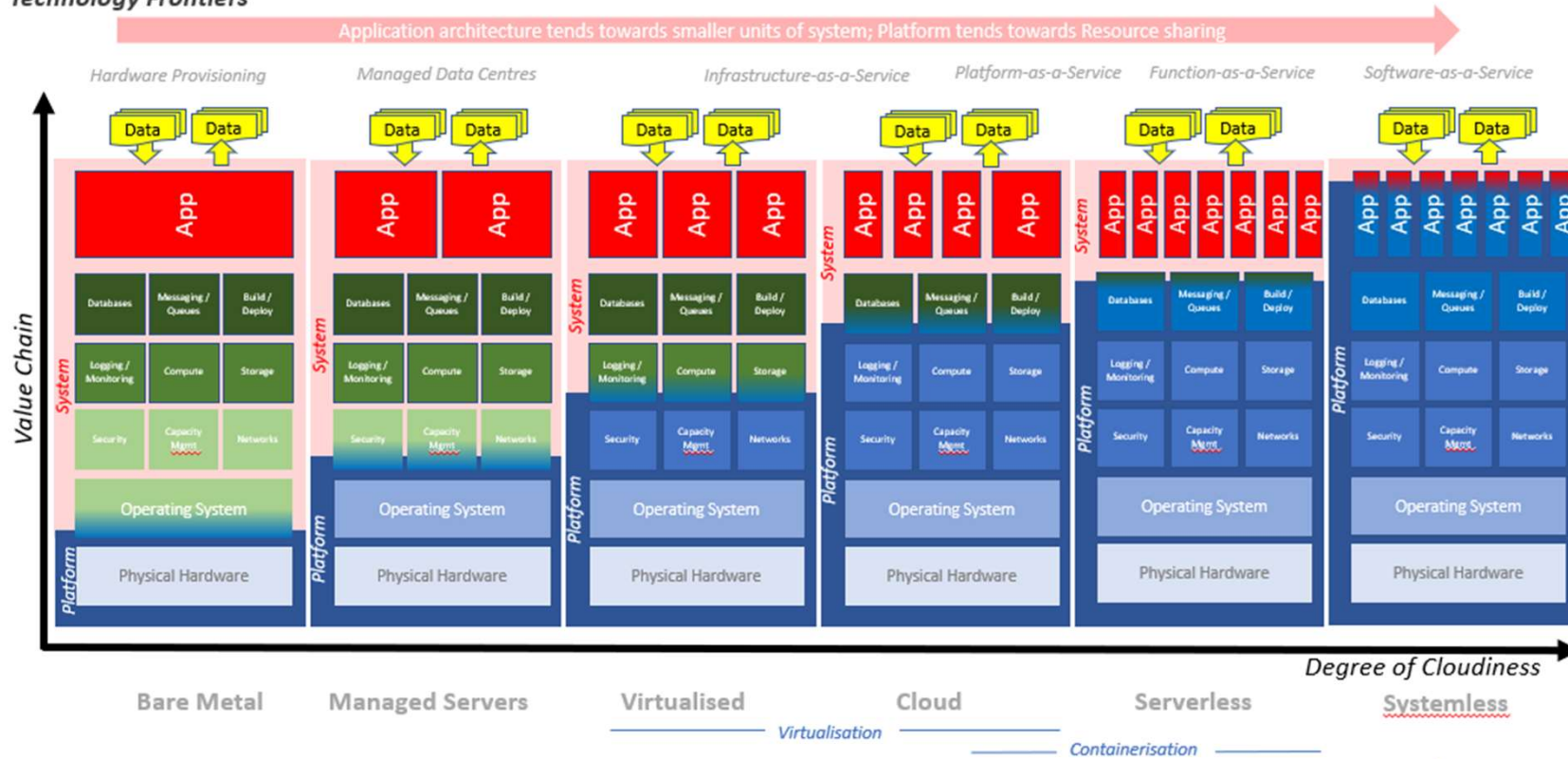
Communities





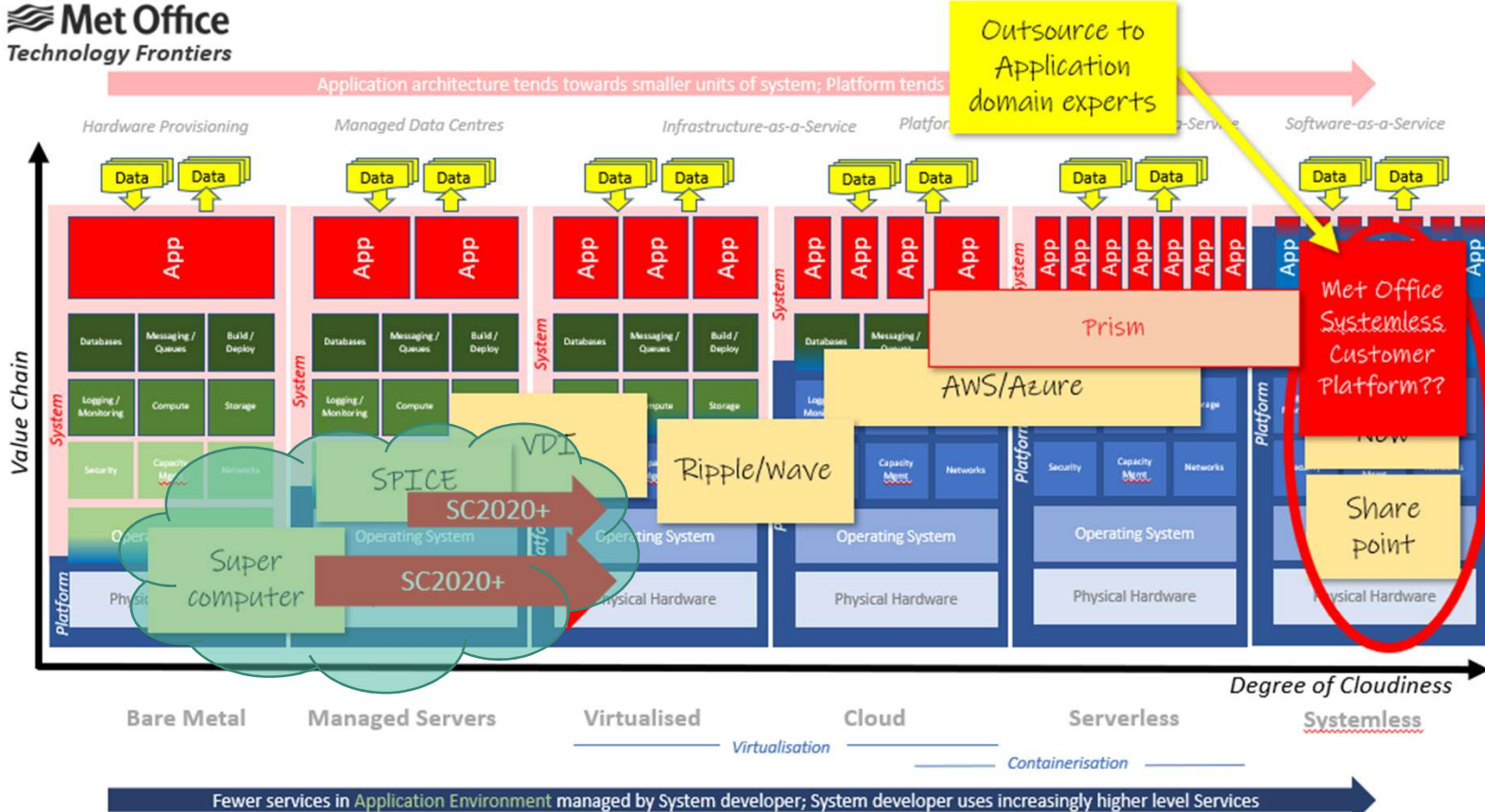






NB: examples of Services only. Not a complete or precise value-chain depiction. For illustration of cloudiness only

Crown Copyright 2021 - Confidential / Internal Use Only



NB: examples of Services only. Not a complete or precise value-chain depiction. For illustration of cloudiness only

Crown Copyright 2021 - Confidential / Internal Use Only



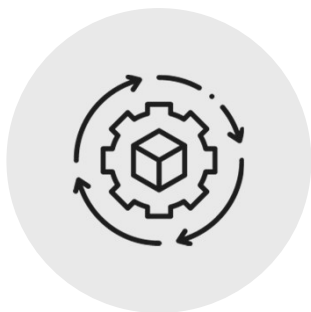
Theme 1

Data and...
More (shared) data



Theme 2

Forecasting and...
forecasters



Theme 3

Demand and supply
of services...
Weather / Climate /
Water / Environment
intelligence driving
decision making



Theme 4

Capacity gap
- Alleviating
inequality and
advancing together



Theme 5

Roles,
responsibilities,
partnerships for
common action



Run



Grow



Transform



Run the machine



Grow the machine



Transform the machine

Our Values



We're a force for good.

Our planet matters. The time is now, and we're the people to make a difference. That's why we take our environmental and social impact seriously.



We're experts by nature.

It's in our nature to be curious - always learning and developing to do things better. We trust in each other's expertise and take pride in being the best in our field.



We live and breathe it.

Helping people make better decisions to stay safe and thrive is what we live for. Their lives guide our decisions and their trust guides our actions.



We're better together.

Great minds don't always think alike. And we like it that way. We believe partnerships, inclusivity and honesty make us far greater than the sum of our parts.



We keep evolving.

When we're not looking up, we look ahead. We push the boundaries to make tomorrow better for our customers. Forecasting the future is one thing. Creating it is another.